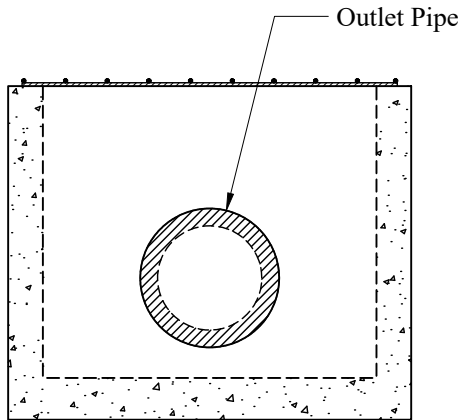
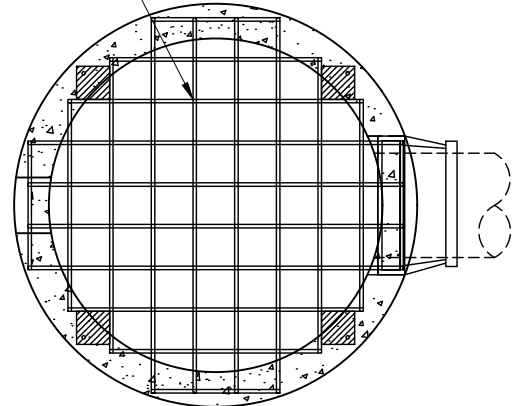


Welded Rebar Grate
Finish As Required

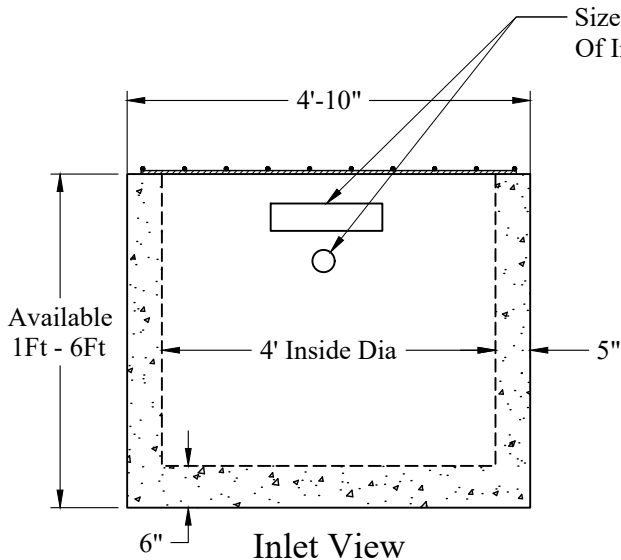


Outlet View

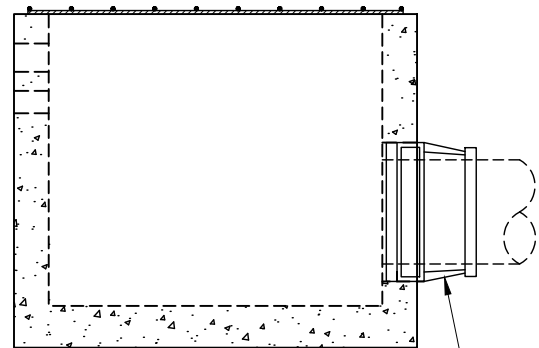


Plan View

Size, Quantity & Location
Of Inlets As Specified



Inlet View



Optional Booted Outlet
Pipe Connection
Side View

General Notes

1. Steel Reinforcement Conforms to Latest ASTM Specification:
ASTM A-615, Grade 60 Black Deformed Bars
ASTM A-185 Welded Wire Fabric
0.12 Sq. In./Lineal Ft. And 0.12 Sq. In.(Both Ways) Base Bottom
2. Concrete: $f_c = 4,000$ psi @ 28 Days Minimum, Type III Cement
3. Butyl Rubber Joint Sealant Provided Conforms to ASTM C-990
And Federal Spec SS-S-210A
4. HS-20 Design Loading Conforms to Latest Specifications
ASTM C478, AASHTO M199 Precast Reinforced Concrete
Manhole Sections
5. One Pour Monolithic Base Section
6. Grates Fastened with SS Hardware

**Phoenix
Precast
Products**

Standard 4' Diameter
Outlet Control Structure
Butt Top
With Flat Rebar Top Grate

P/N: Custom As Required

Concord, NH 03301