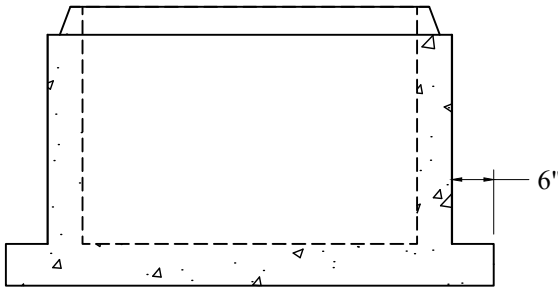


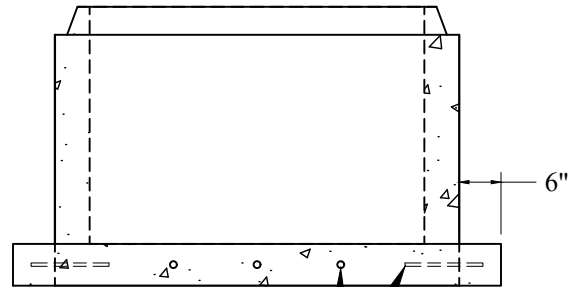
Standard  
One-Pour Monolithic



Separate  
Tongue & Groove Base



Extended  
One-Pour Monolithic



Drill & Dowel Before  
Extension is Poured

Modified Extended

**General Notes**

1. Concrete:  $f_c = 4,000$  psi @ 28 Days Minimum, Type III Cement
2. HS-20 Design Loading Conforms to Latest Specifications  
ASTM C478, AASHTO M199 Precast Reinforced Concrete  
Manhole Sections
3. One Pour Monolithic Base Section (Unless Otherwise Noted)
4. Steel Reinforcement Conforms to Latest ASTM Specification:  
ASTM A-615, Grade 60 Black Deformed Bars  
ASTM A-185 Welded Wire Fabric
5. Sections Available in Increments of 6"
6. Plastic Manhole Steps (If Required) are Steel Reinforced  
Conforming to ASTM C-478

Phoenix Precast Products	Typical Sumps & Bases
--------------------------------	--------------------------

P/N: None

Concord, NH 03301