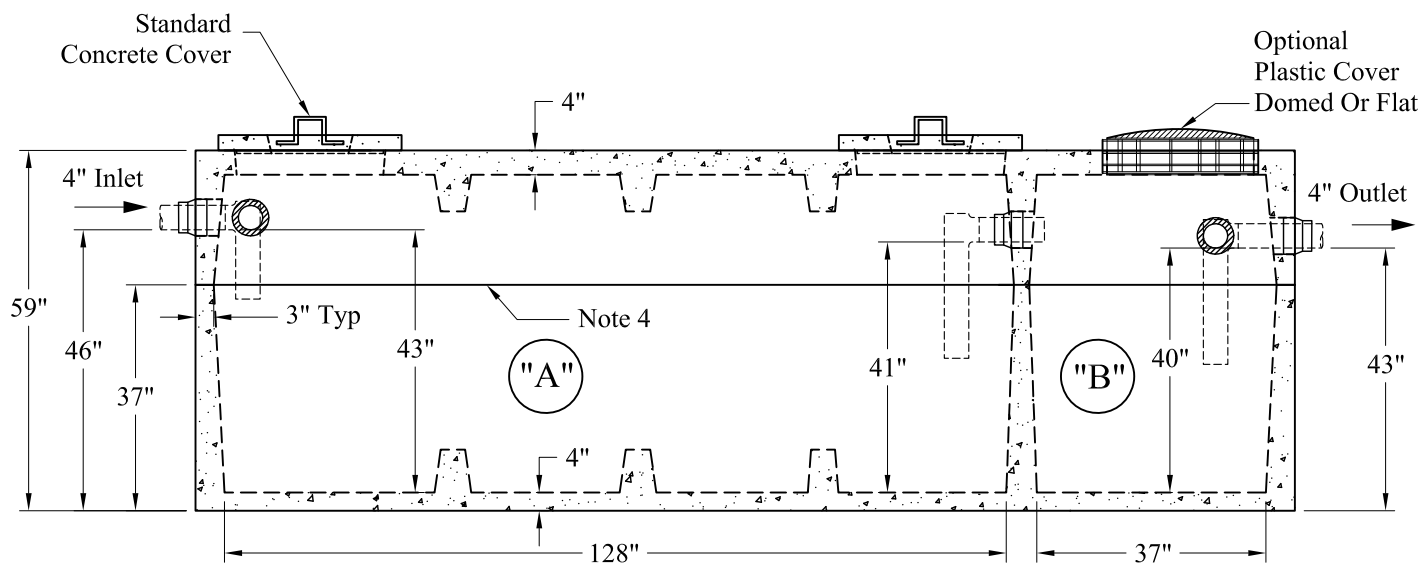
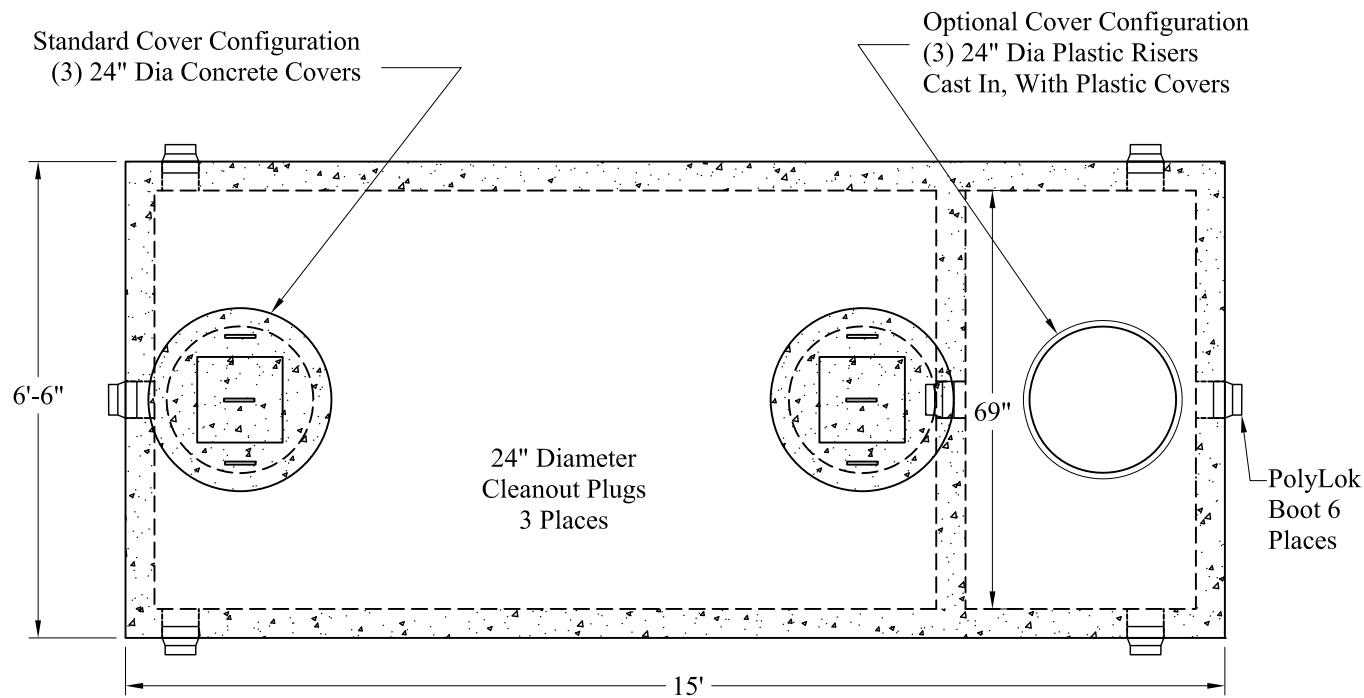


C:\Users\trouille\OneDrive - Sabbow & Co Inc\way r Web Site 2024\Septic_Tanks\2
 Compartment HD Mid-Seam\Small_HD_2 Comp_1600-450_Tank_Rev4.dwg

Phoenix Precast Products

Phoenix Precast Products



General Notes

1. Steel Reinforcement Conforms to Latest ASTM Specifications: ASTM-A615 Grade 60 Rebar
2. Concrete: $f_c = 4,000$ psi @ 28 Days Minimum
3. Flexible Sleeves Used On All Pipe Openings
4. Butyl Rubber Joint Sealant Provided
5. Internal PVC Baffles Available

Inlet:

Shall Penetrate at Least 9" Below the Liquid Level
 But Not Deeper Than the Outlet Baffle.

Outlet:

Shall Extend Below the Surface of the Liquid
 Equal to 40% of the Liquid Depth (17").

6. HD Tanks: 3' - 6' Cover Max, Non-Traffic

"A" Liquid Level = 473 Gals/VF (39 Gals/In)

"B" Liquid Level = 143 Gals/VF (12 Gals/In)

"A" = 1,599 Gals

"B" = 480 Gals

Total = 2,079 Gals

Est Weight:

Top: 9,440 Lbs

Base: 11,790 Lbs

Total: 21,230 Lbs

Phoenix
 Precast
 Products

1,600 / 450 Gallon HD
 2 Compartment Tank

P/N: ST-1600/450HD

P/N: ST-1600/450PLSHD

Concord, NH 03301