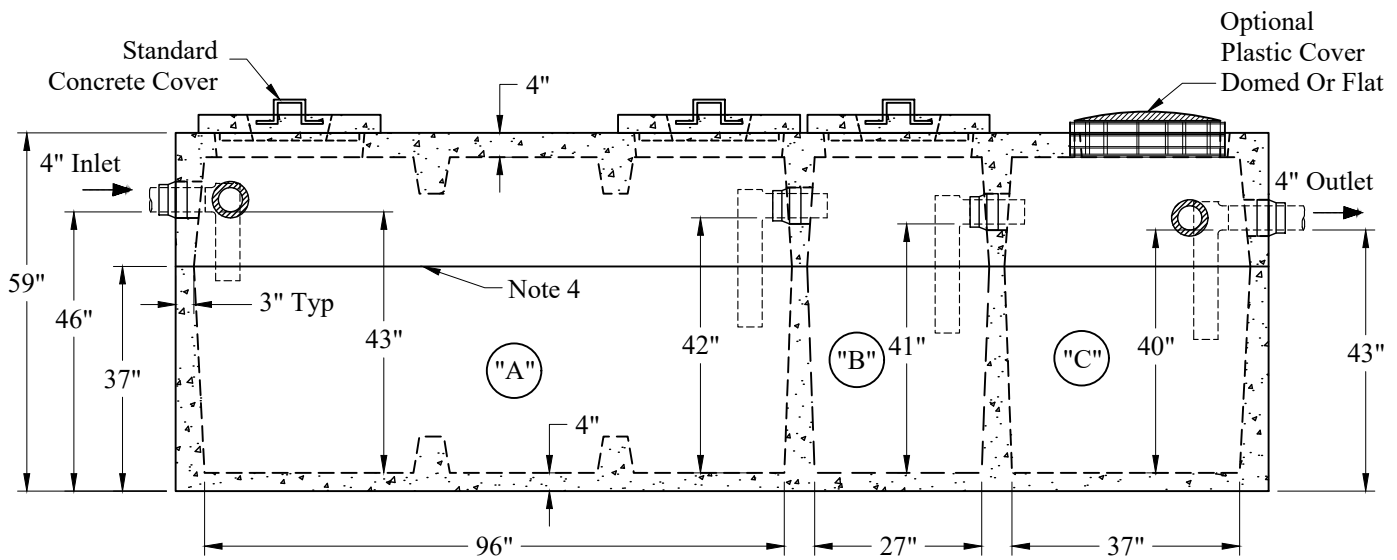
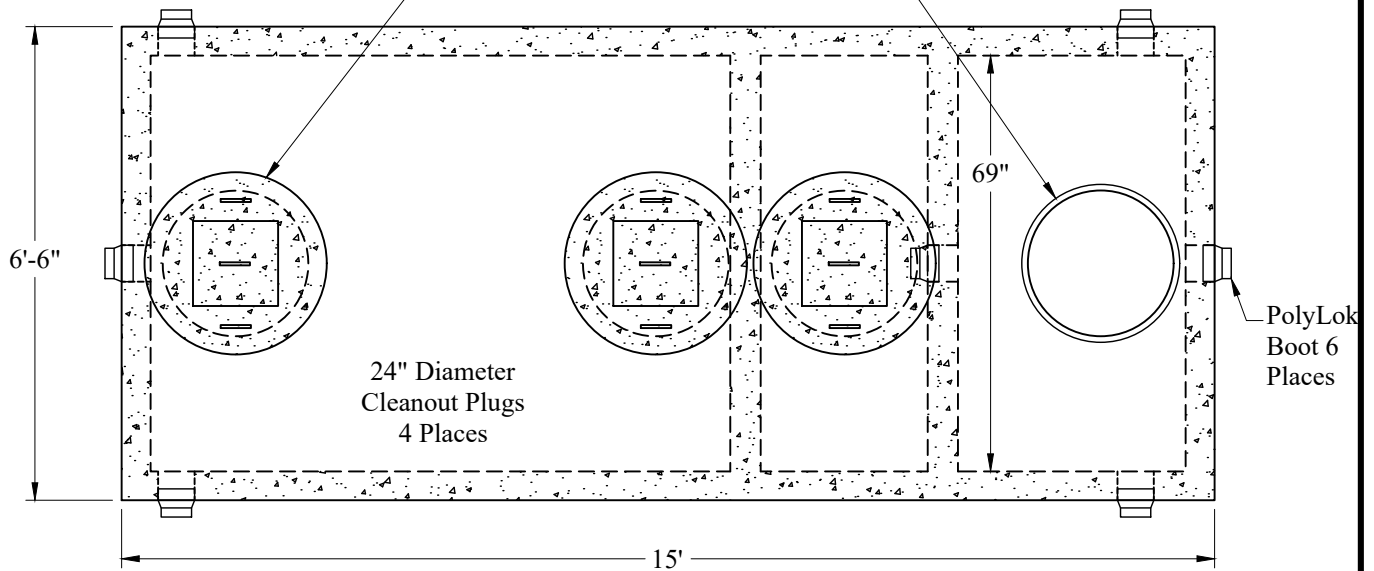


Standard Cover Configuration
(4) 24" Dia Concrete Covers

Optional Cover Configuration
(4) 24" Dia Plastic Risers
Cast In, With Plastic Covers



"A" Liquid Level = 355 Gals/VF (30 Gals/In)

"B" Liquid Level = 105 Gals/VF (9 Gals/In)

"C" Liquid Level = 143 Gals/VF (12 Gals/In)

"A" = 1,260 Gals

"B" = 369 Gals

"C" = 480 Gals

Total = 2,109 Gals

Est Weight:

Top: 9,750 Lbs

Base: 12,500 Lbs

Total: 22,250 Lbs

General Notes

1. Steel Reinforcement Conforms to Latest ASTM Specifications: ASTM-A615 Grade 60 Rebar
 2. Concrete: $f_c = 4,000$ psi @ 28 Days Minimum
 3. Flexible Sleeves Used On All Pipe Openings
 4. Butyl Rubber Joint Sealant Provided
 5. Internal PVC Baffles Available
- Inlet:
Shall Penetrate at Least 9" Below the Liquid Level But Not Deeper Than the Outlet Baffle.
- Outlet:
Shall Extend Below the Surface of the Liquid Equal to 40% of the Liquid Depth (17").
6. HD Tanks: 3' - 6' Cover Max, Non-Traffic

Phoenix
Precast
Products

Small HD
3 Compartment Tank

P/N: ST-1200/340/450HD

P/N: ST-1200/340/450PLSHD

Concord, NH 03301