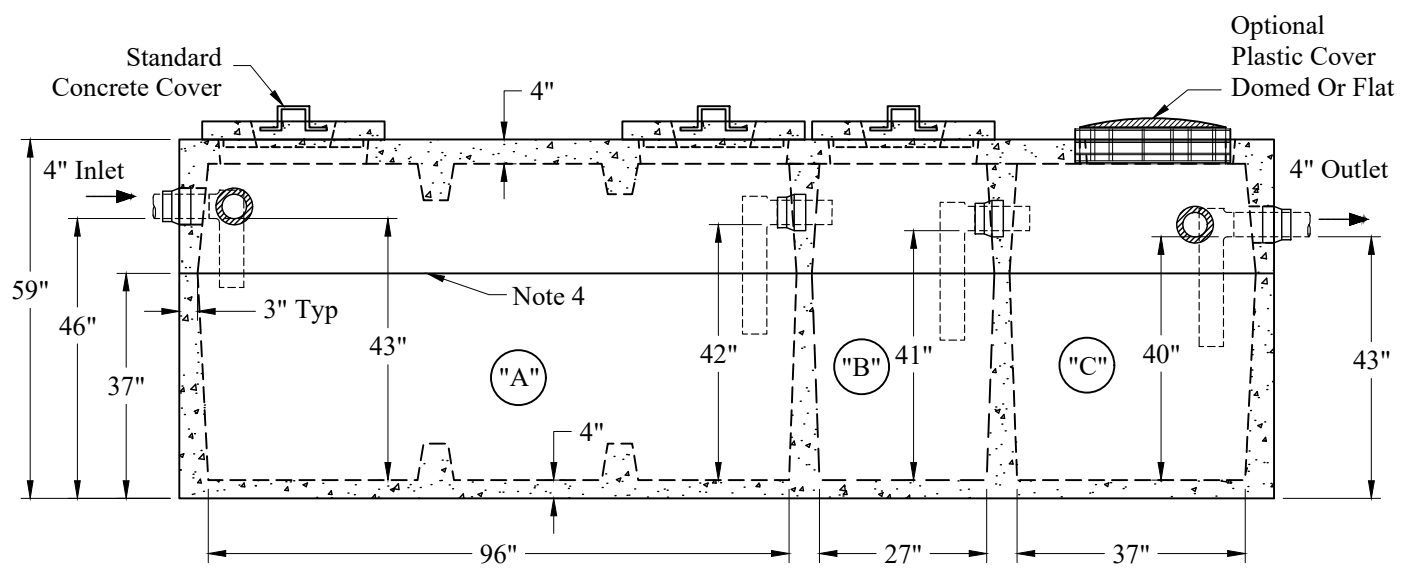
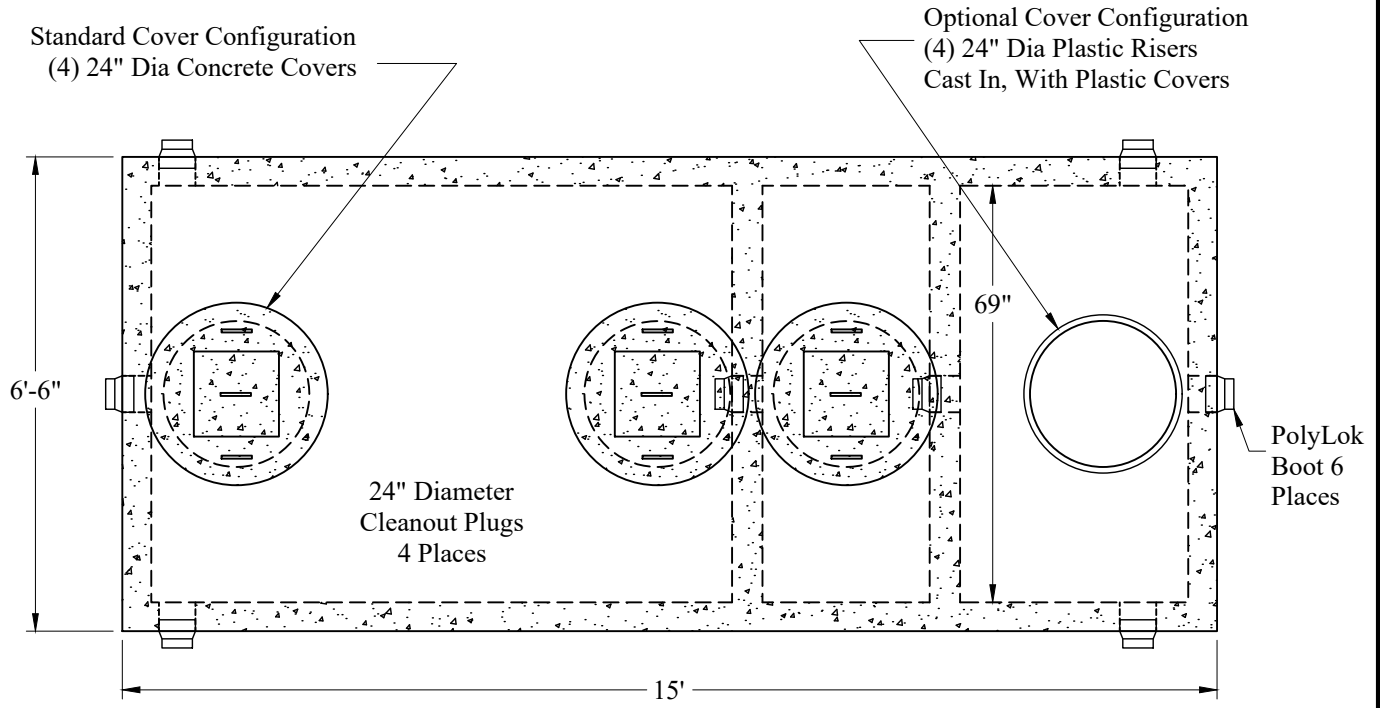


C:\Users\rouille\OneDrive - Sabbow & Co Inc\ray r Web Site 2024\Septic\_Tanks\3 Compartment LD Mid-Seam\Small\_LD\_3\_Comp\_Tank\_Rev7.dwg

Phoenix Precast Products

Phoenix Precast Products



"A" Liquid Level = 355 Gals/VF (30 Gals/In)  
 "B" Liquid Level = 105 Gals/VF (9 Gals/In)  
 "C" Liquid Level = 143 Gals/VF (12 Gals/In)  
 "A" = 1,260 Gals  
 "B" = 369 Gals  
 "C" = 480 Gals  
 Total = 2,109 Gals

Est Weight:  
 Top: 9,750 Lbs  
 Base: 12,500 Lbs  
 Total: 22,250 Lbs

**General Notes**

1. Steel Reinforcement Conforms to Latest ASTM Specifications: ASTM-A615 Grade 60 Rebar
  2. Concrete:  $f_c = 4,000$  psi @ 28 Days Minimum
  3. Flexible Sleeves Used On All Pipe Openings
  4. Butyl Rubber Joint Sealant Provided
  5. Internal PVC Baffles Available
- Inlet:  
 Shall Penetrate at Least 9" Below the Liquid Level But Not Deeper Than the Outlet Baffle.
- Outlet:  
 Shall Extend Below the Surface of the Liquid Equal to 40% of the Liquid Depth (17").
6. LD Tanks: 3' Cover Max, Non-Traffic

|                                |                                |
|--------------------------------|--------------------------------|
| Phoenix<br>Precast<br>Products | Small LD<br>3 Compartment Tank |
|--------------------------------|--------------------------------|

P/N: ST-1200/340/450LD  
 P/N: ST-1200/340/450PLSLD

Concord, NH 03301